



# Victor

instruction manual

# INTERJUKE

---



Please read this manual when using the functions of Net MD on SS-NT1MD and a personal computer.

— Thank you for your purchase —



Please read

this "Instruction Manual" carefully before use to ensure correct use. Then keep it in a safe place and read it when necessary.

LVT0936-001C

- "ATRAC3" and "ATRAC3" logos, "OpenMG" and SonicStage is a trademark of Sony Corporation.

OpenMG, "Net MD" and



- Microsoft, Windows, DirectX and Windows Media are from Microsoft Corporation in the United States and others. It is a registered trademark or trademark in the country.
- IBM and PC / AT are registered trademarks of International Business Machines Corporation in the United States.
- Pentium and MMX are registered trademarks of Intel Corporation in the United States.
- CDDB is a registered trademark of Gracenote.
- Music recognition technology and related data are provided by Gracenote and the Gracenote CDDB®

Music Recognition ServiceSM. Gracenote is the industry standard in music recognition technology and related content delivery. For more information visit [www.gracenote.com](http://www.gracenote.com).

Gracenote is CDDB, Inc. d / b / a "Gracenote." CD and music-related data from Gracenote CDDB® Music Recognition Service SM © 2000, 2001, 2002 Gracenote. Gracenote CDDB Client Software © 2000, 2001, 2002 Gracenote. US Patents Numbers # 5,987,525; # 6,061,680; # 6,154,773, and other patents issued or pending.

CDDB is a registered trademark of Gracenote. The Gracenote logo and logotype, the Gracenote CDDB logo and logotype, and the "Powered by Gracenote CDDB" logo are trademarks of Gracenote. Music Recognition Service and MRS are service marks of Gracenote.

- Powered by DigiOn  
Portion Copyright © 2002 DigiOn, Inc.
- Other system names and product names are generally trademarks or registered trademarks of each development manufacturer. In the text, ™ and ® marks Ku is not specified.
- Reproduction of part or all of the contents of this software and the instruction manual without the permission of the right holder. And renting software is prohibited by copyright law in any form.
- This software can only be used on the specified device.
- The specifications of this software and the contents of the instruction manual are subject to change without notice for improvement.

About this instruction manual ¶ This

instruction manual explains the basic usage of INTERJUKE. Compact component MD

For the operation of the system (hereinafter abbreviated as "main unit"), refer to the instruction manual of the main unit.

0053 The explanation is based on the assumption that INTERJUKE will be used on Windows XP. Depending on the OS you are using, some screens may differ.

Regsvr For basic Windows operations and handling of your computer, see the instruction manual that came with your device.

## About help

‡ Please use the help for more detailed explanation of INTERJUKE and how to deal with troubles.

You can get help by selecting Help from the menu bar.

## Table of contents

	page
Introduction	
What you can do with INTERJUKE. . . . .	Four
Record music on your computer . . . . .	Four
Manage and play saved music files . . . . .	Four
Transfer music files to the main unit (check-in / check-out) . . . . .	Four
Operate the main unit from a computer (component control) . . . . .	Four
About copyright protection . . . . .	Five
What is the copyright protection technology "OpenMG"? . . . . .	Five
Restrictions by OpenMG . . . . .	Five
SCMS (Serial Copy Management System) . . . . .	Five
HCMS (High Speed Copy Management System) . . . . .	Five
Install INTERJUKE . . . . .	6
Required system configuration . . . . .	6
Install on your computer . . . . .	7
Start INTERJUKE . . . . .	Ten
About the screen	page
How to read the screen . . . . .	11
INTERJUKE screen overview . . . . .	11
Playlist screen . . . . .	12
Music CD screen . . . . .	13
Music file (import) screen . . . . .	14
Check-in / Check-out screen . . . . .	15
Component screen (component control) . . . . .	16
Internet screen . . . . .	17
Navigation screen . . . . .	18
basic operation	page
Record music . . . . .	19
Record a song on a music CD . . . . .	19
Import music files on your computer's hard disk . . . . .	21
Create and manage playlists . . . . .	twenty two
Create a new playlist . . . . .	twenty two
Edit an existing playlist . . . . .	twenty three
Play music . . . . .	twenty four
Play the songs in the playlist . . . . .	twenty four
Play music files on a CD-ROM drive or hard disk . . . . .	25
Check in / check out. . . . .	27
Transfer music files to the console (checkout) . . . . .	27
Return the checked out music files to your computer (check in) . . . . .	28
Operate the main unit from a computer (component control) . . . . .	Use
the navigation function . . . . .	32
Start the navigation function . . . . .	32
Reference	page
Menu list . . . . .	34
Uninstall INTERJUKE . . . . .	36
For Windows XP / Windows 2000 Professional . . . . .	36
For Windows 98 / Windows 98 Second Edition / Windows Me . . . . .	36
About backup / restore of music data . . . . .	Glossary
Index . . . . .	38
	39

# What you can do with INTERJUKE

---

With INTERJUKE, you can save your music CDs and various music files to your computer's hard disk and enjoy them on your computer. Music data saved on the hard disk can be played and managed on a computer, and can also be transferred (checked out) to the main unit for enjoyment. The copyright protection technology "OpenMG" enables the storage and playback of music data without damaging the interests of the copyright holder.

## Record music on your computer

Record songs \* on your music CD, import various music files and save them on your computer's hard disk to create OpenMG music files. (See page 19)

\* It is not possible to record directly to the hard disk of a personal computer using the CD player of the main unit.

## Manage and play saved music files

Music files created and saved by INTERJUKE can be classified and managed by artist, album, and genre. Since you can import your own music CDs, you can organize and manage a large number of CDs in a batch. You can also collect your favorite songs, decide the playback order freely, and register them as an original "playlist".

You can play music files created and saved by INTERJUKE, as well as music files stored on the hard disk of your computer. You can also enjoy music with the speaker of the main unit. (See page 22)

## Transfer music files to the main unit (check-in / check-out)

By transferring the music files created and saved by INTERJUKE to the main unit, you can create and enjoy an original MD that collects your favorite songs. Transferring music files from your computer is called "checkout". You can check out up to 3 times if you recorded from a music CD. Returning the checked out music files to your computer is called "check-in". (See page 27)

## Operate the main unit from a personal computer (component control)

You can operate the functions of the main unit from the computer by connecting the computer on which INTERJUKE is installed and the main unit with the USB cable attached to the main unit and pressing the [PC-Net MD] button on the main unit to turn on the component control function. .. (See page 29)

### Note

The installed INTERJUKE is an application dedicated to the main unit "SS-NT1MD". Therefore, only check-in / check-out with the "SS-NT1MD" main unit is guaranteed. We do not guarantee the operation of check-in / check-out with Net MD compatible devices made by other companies. In addition, check-in / check-out with other external devices and media is not guaranteed.

# About copyright protection

Music is a copyrighted work and is protected by copyright law. Reproduction within the range of personal enjoyment is permitted, but music files may not be published on the Internet without the permission of the copyright holder (including record companies), or distributed / distributed beyond the private scope. , It is a violation of copyright law.

When you enjoy music files created by INTERJUKE, you need to be careful about the copyright, but INTERJUKE has taken all possible copyright protection measures.

## What is copyright protection technology "OpenMG"?

OpenMG is a technology that creates a copyright protection environment when handling music files on a personal computer. INTERJUKE installed on the personal computer encrypts the music data and records it on the hard disk of the personal computer, so that the data can be managed without infringing the rights of the copyright holder. Encryption prevents copying and checking out to other computers, preventing unauthorized use of data and unauthorized distribution to the Internet. (For details, see "Explanation of vocabulary" on page 38.)

## Restrictions by OpenMG

Although INTERJUKE uses OpenMG, there are some restrictions on recording, playback, and transfer in INTERJUKE to protect copyright. • You can check out up to 3 times if you have recorded a music CD. • You can check out to another MD disk by checking in and back. • You can check in the checked out music files only to the computer from which you checked out. • You cannot check in the checked out music files to another computer. • Music files cannot be copied or transferred to other computers. • From copyright holders and service providers to music files imported from music distribution services such as the Internet.

If there are usage restrictions such as the playback period and the number of playbacks, those restrictions will be applied during playback.

## SCMS (Serial Copy Management System)

SCMS is a generation management standard for digital copy. In digital recording, the audio signal is exchanged as a digital signal through the digital input / output terminal, so the music signal is recorded (copied) with almost no deterioration. For this reason, copy restrictions that protect copyright are required, and only one generation can copy digital signals between digital audio devices. Due to this standard, MDs digitally recorded by INTERJUKE cannot be digitally recorded on other devices.

## HCMS (High Speed Copy Management System)

HCMS is a standard that restricts high-speed recording of the same song again within 74 minutes from the start of high-speed recording. Since the MD for recording can record (copy) at a speed exceeding the constant speed, there are restrictions on double-speed recording to protect the copyright. According to this standard, a song once recorded at double speed from a CD cannot be recorded at double speed again until 74 minutes have passed from the start of recording the song. For example, if the first song on a CD is recorded at double speed, the first song on the CD cannot be recorded at double speed again for 74 minutes after the double speed recording starts.

When programming a CD and recording at double speed, if the same song is included in the program, this standard will cause the recording to stop prematurely. When programming and recording the same song, record at a constant speed.

First

# Install INTERJUKE

‡ Be sure to complete the installation of INTERJUKE before connecting the main unit and your computer with the USB cable supplied with the main unit. Also, do not install with the main unit connected. Be sure to restart the computer after the installation is completed, connect the main unit, and then start INTERJUKE. 0053 When you connect the main unit and the computer for the first time, you need to install the driver. For details, see  
Please see the instruction manual.

## Required system configuration

The following environment is required to install and use INTERJUKE.

Adaptive PC	IBM PC / AT compatibles with USB port
Supported OS (Japanese version)	Windows XP Professional Windows XP Home Edition Windows Millennium Edition Windows 2000 Professional Windows 98 Second Edition Windows 98
CPU	Pentium II 300MHz or higher (Pentium II 400MHz or higher recommended)
Main memory	64MB or more 128MB or more recommended (Windows XP / Windows 2000 Professional)
Free hard disk space	150MB or more (Free space is required depending on the version of Windows and music data.)
display	Resolution 800 x 600 dpi or higher, High Color (16-bit) or higher (minimum) Resolution 1024 x 768 dpi or higher, High Color (16-bit) or higher (recommended)
Video card	16-bit color
sound source	Sound card
others	CD-ROM drive Internet connection environment Web browser (Microsoft Internet Explorer 5.01 or later) Japanese input system (Microsoft IME 98 or later) DirectX 8.1

- Depending on the CD-ROM drive you are using, it may not work properly. •

Operation is not guaranteed when connected with a USB hub or extension cable.

- Operation is not guaranteed in an environment where Windows 3.1 / 95 is upgraded to Windows 98/98 Second Edition / Millennium Edition, or Windows Millennium Edition / Windows 2000 Professional is upgraded to Windows XP. • We do not guarantee the operation in the dual boot environment of the OS. • It may not work depending on the hardware and environment settings of your computer. (We guarantee the operation on your own PC.

plug. ) In addition, we do not guarantee the operation of all PCs in the recommended environment.

- INTERJUKE cannot be installed on a computer that has an older version of OpenMG Jukebox \* or SonicStage \* installed. You need to upgrade your OpenMG Jukebox or SonicStage. See [Omgup] on the INTERJUKE CD-ROM for details.

\* OpenMG Jukebox and SonicStage are software from Sony Corporation.

## Install on your computer

To use INTERJUKE, you need to install INTERJUKE on your computer. Before starting the installation, turn on your computer and start Windows. Please install after closing all Windows programs.

Before installation regsvr

For Windows XP / Windows 2000 Professional

Log in with an account for system administrators (Administrator or a user who belongs to the Administrators group).

### 1 For Windows 98/98 Second Edition Before

installing INTERJUKE, Microsoft Internet Explorer 5.01 or later web browser must be installed.

### 2 Insert the installation CD-ROM into your computer's CD-ROM drive.

The installer will start automatically and the installation start screen will be displayed.



- If the installation start screen does not appear automatically even after inserting the CD-ROM, perform the following operations.

- 1 Double-click [My Computer] on the desktop.
- 2 Double-click [INTERJUKE], which indicates the CD-ROM drive.
- 3 Double-click [Setup].

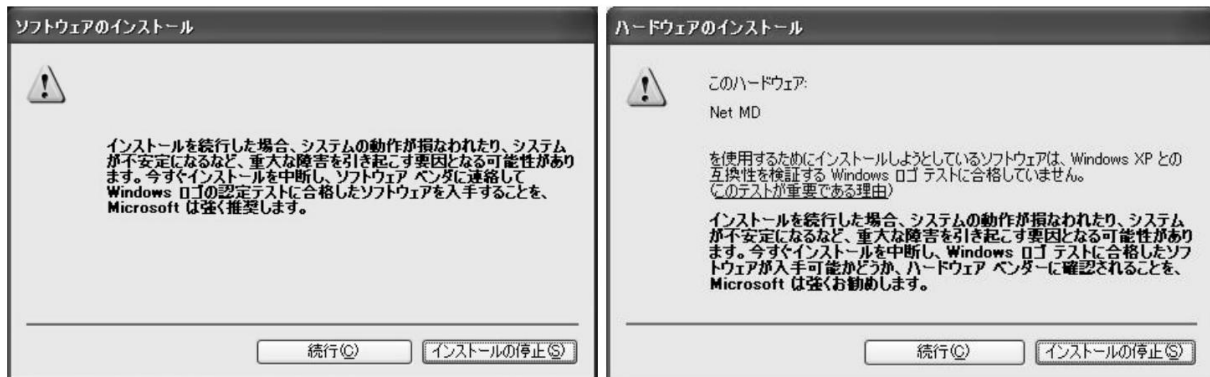
(Continued on the next page)

### 3 Click "INTERJUKE Setup"

The installation will start. Then follow the instructions on the screen. •

In "INTERJUKE setup", in addition to INTERJUKE, the Net MD driver and DirectX 8.1 runtime are also installed at the same time. (However, on Windows XP, the DirectX 8.1 runtime is not installed.)

- In Windows XP, the warning message "Install software" is displayed when installing the driver, and "Install hardware" is displayed when the main unit is connected with the USB cable for the first time (see the figure below). There is no operational problem, so just select "Continue".



### 4 Installation is complete

To use INTERJUKE, you need to restart your computer. Follow the instructions on the screen to restart your computer.

#### Notes

- Do not play the installation CD-ROM on a general audio CD player.  
It may damage the speaker or damage your ears.
- Keep the installation CD-ROM in a safe place. It is used when reinstallation is required even after the installation is completed.



Check if the Net MD driver is installed correctly On the Windows "Device Manager" screen, check if the main unit is recognized correctly. When you connect the main unit to a computer and press the [PC-Net MD] button on the main unit, "Net MD" will be displayed in the "Device Manager" screen. Check the status of the Net MD driver by the following method.

---

## 1 From the [Start] button, click [Control Panel] \*

\* Except for Windows XP, from the [Start] button, click [Settings]-[Control Panel].

---

## 2 In Classic view: Double-click [System] \* In category view: Click [Performance and Maintenance]-[System] The "System Properties" screen is displayed.

\* Similarly, on non-Windows XP, double-click [System].

---

## 3 Click the Hardware tab, then click Device Manager.

The "Device Manager" screen is displayed.

- Depending on your OS, there is no [Hardware] tab. In this case, go to the Device Manager tab Click to display the "Device Manager" screen.

---

## 4 Double-click [USB (Universal Serial Bus) Controller]

- If [Net MD] is displayed, the Net MD driver is installed correctly.
- If [Net MD] is not displayed (when Net MD is marked with "!") 1 Double-click [Other devices] and select [Unknown device] with "!" Below it. And remove 2 if the driver is already installed:

Reconnect the main unit and press the [PC-Net MD]  
button on the main unit. If the driver is not installed:  
Install the driver

About INTERJUKE version upgrade For the latest software download and support information, see [WEB Site]-[INTERJUKE Home Page] from the [Help] menu.

# Start INTERJUKE

## 1 Double-click the [INTERJUKE] icon on the desktop.

INTERJUKE will start and the INTERJUKE screen will be

displayed. • Click the [Start] button and click [All Programs \*]-[INTERJUKE]-[INTERJUKE] to start the program.

\* Except for Windows XP, it is [Program].

## 2 Since the navigation is displayed, click any icon to switch to the screen you want to operate with the navigation.

Or you can close the navigation and return to the

INTERJUKE screen. You can also set the navigation not to be displayed when you start INTERJUKE. Select [Tools]-[Preferences]-[Others] and uncheck "Show navigation at startup".

Note

• Please also read "Listen to the sound of other devices" in the instruction manual of the main unit.

0053 If you are using Windows XP or Windows 2000 Professional, the following is a list to use INTERJUKE.

Please log in with your account.

Windows XP Professional / Windows 2000 Professional: • Account

for system administrators (users who belong to the Administrator or Administrators group) • Standard user (Power User)

Windows XP Home Edition:

• Account for system administrators (users who belong to the Administrator or Administrators group)

Regsvr If you perform multiple tasks on INTERJUKE at the same time, it may not work properly depending on the performance of your computer.

Regsvr Do not start and use INTERJUKE at the same time as other music software.

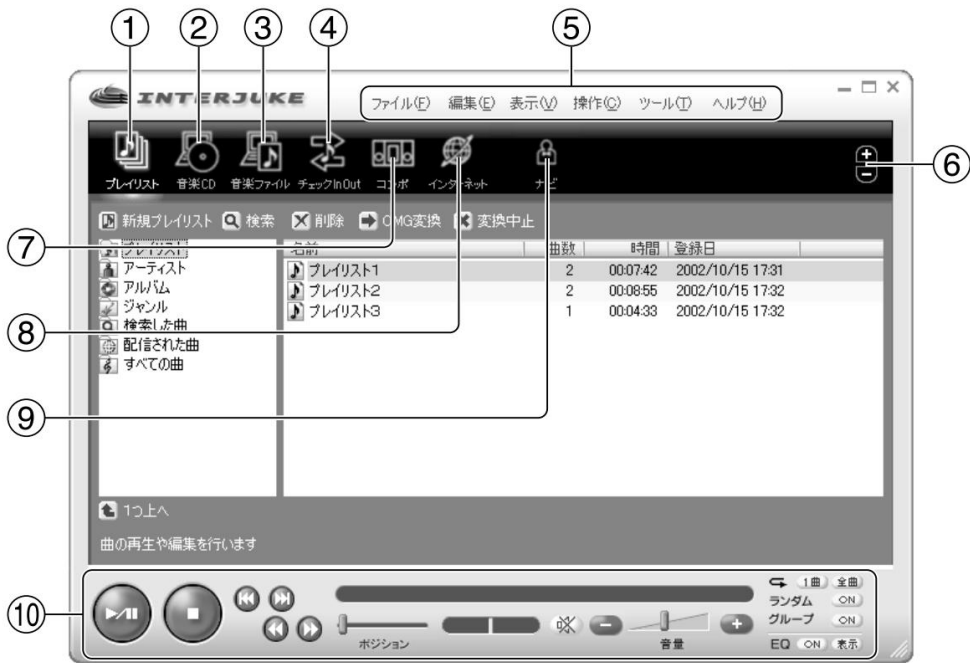
Regsvr If you run INTERJUKE while operating other applications, it may not work properly.

## How to read the screen

I will explain the names of each part of the screen of INTERJUKE and the outline of their functions. See help for more details.

0053 The appearance of the screen may differ depending on the product or OS you are using.

## INTERJUKE screen overview



- a [Playlist] Displays the playlist screen. (Page 12)
- b [Music CD] Displays the music CD screen. (Page 13)
- c [Music File] Displays the Music File (Import) screen. (Page 14)
- d [Check In Out] Displays the check-in / check-out screen. (Page 15)
- e Menu bar

It is a menu of INTERJUKE. For details on each menu, see "Menu List" on page 34.

- f Volume control Adjusts the volume of the main unit. (Displayed only when the component control function is turned on.)
- G [Compo] Displays the component screen (component control). (Page 16)
- h [Internet] Displays the Internet screen. (Page 17)
- i [Navi] Displays the navigation screen. (Page 18)

- j Player operation section Performs operations such as playing, pausing, stopping, cueing, and repeating music files in playlists, music CDs in the CD ROM drive of a personal computer, and CD or MD songs on the main unit. You can also adjust the volume and set the equalizer.

## Playlist screen



a [New playlist] Create a new playlist.

b [Search]

Search for songs from music files managed by INTERJUKE.

c [Delete] Deletes the item selected in the list view (right window) as well as in the playlist in the tree view (left window). d [OMG conversion] Converts the item selected in the list view (right window) to OMG (OpenMG) format. e [Cancel conversion]

Cancels conversion to OMG (OpenMG) format.

f Tree view (left window) Playlists

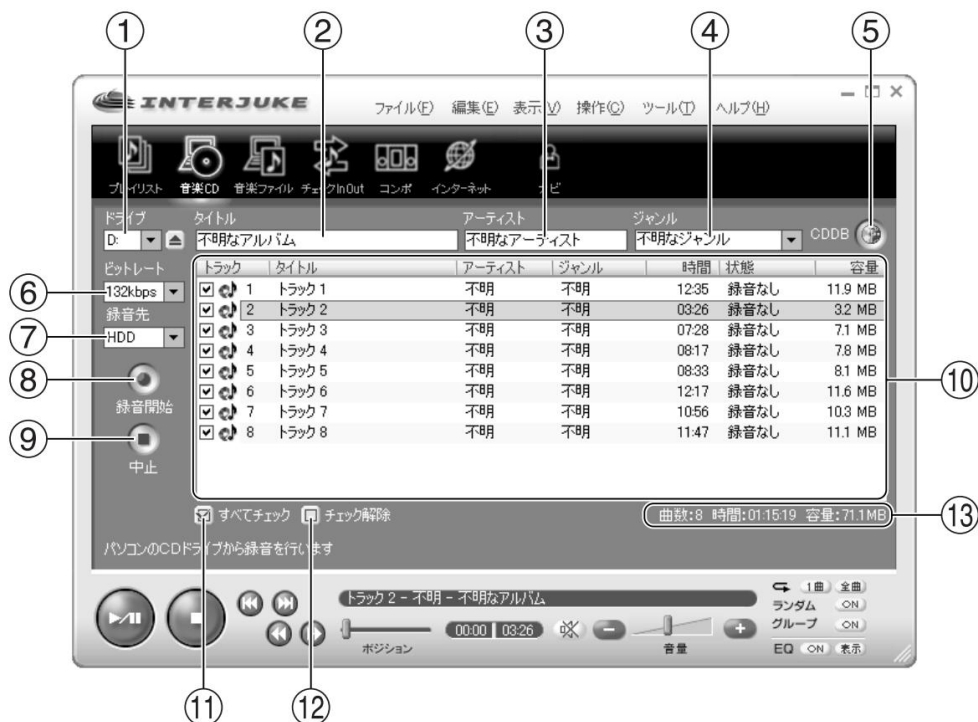
and other information are displayed in Windows explorer format. • Playlists Displays a list of playlists created by collecting your favorite music files with INTERJUKE, and playlists automatically created when you record a music CD. • A list of artists of music files managed by artist INTERJUKE is displayed. • A list of albums of music files managed by the album INTERJUKE is displayed. • A list of music files managed by the genre INTERJUKE is displayed. • All songs A list of all music files managed by INTERJUKE is displayed.

g [Up one]

Moves up one level from the item selected in the tree view (left window). h List view (right window) A list of

music files in the item selected in the tree view (left window) is displayed. i [Number of songs / time / capacity] Display Displays the number of songs, total playback time, and total capacity of tracks in the list view.

## Music CD screen



a [Drive] display Select

the drive containing the music CD. You can also eject the music CD with the eject button on the right. b [Title]

Display field

View / enter an album on a music CD.

c [Artist] display field Display /

enter the artist of the music CD.

d [Genre] display field

Display / enter the genre of the music CD. Or select a genre from the drop-down list.

e [CDDDB]

Connect to CDDDB and capture information from music CDs.

f [bit rate] display

Select the recording bit rate from the drop-down list.

g Select the recording

destination from the [Recording destination] display drop-down list.

h [Start recording]

Start recording.

i [Cancel]

Stops recording.

j Track display

A list of tracks on the music CD and information about each track (track, title, artist, genre, time, status, capacity) is displayed. The amount displayed is the amount required to record on a hard disk or MD.

k [Check All] All tracks

in the track display are candidates for recording.

l [Uncheck] check box All recording

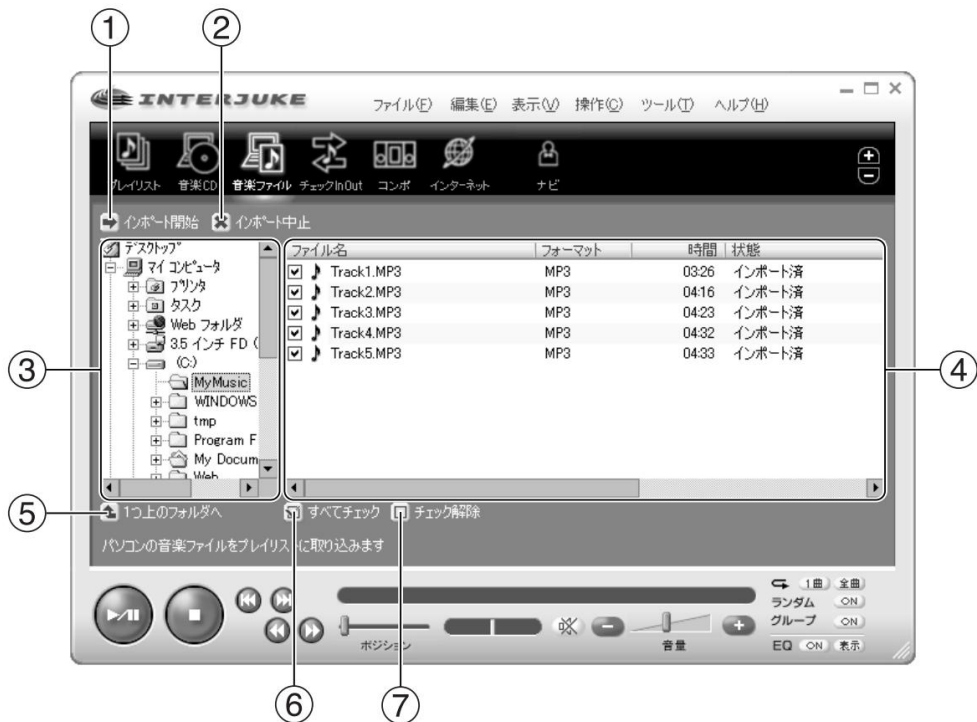
candidates are canceled. m [Number

of songs / time / capacity] Display Displays

the number of songs, total playback time, and total capacity of the checked tracks.

About th

## Music file (import) screen



a [Start import]  
Start import.

b [Cancel Import]  
Cancels the import.

c Tree view (left window)  
Playlists and other information are displayed in Windows explorer format.

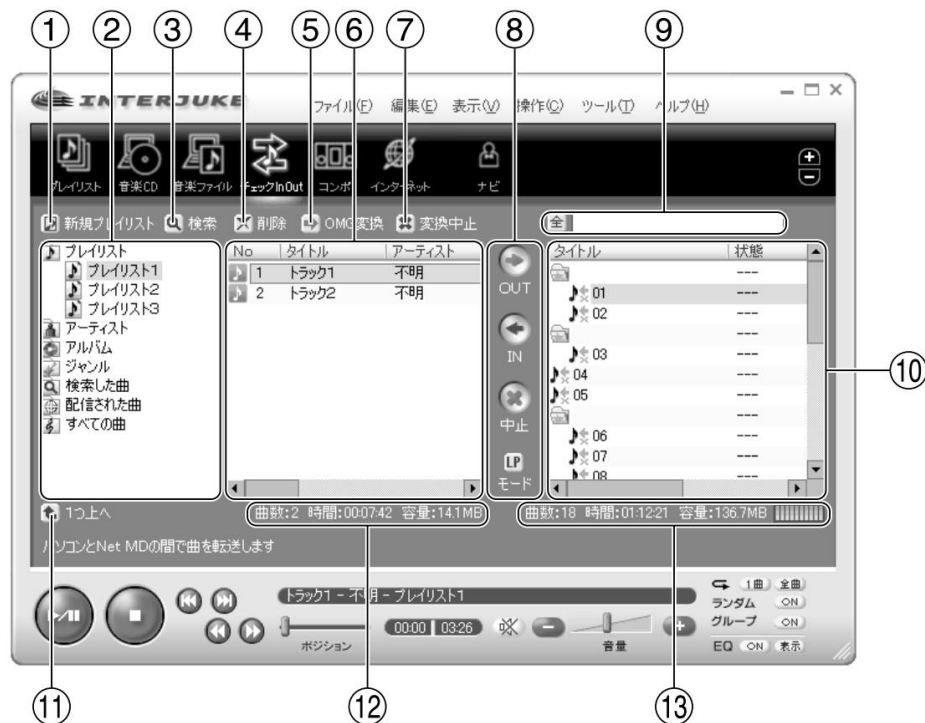
d List view (right window)  
Displays a list of the items selected in the tree view (left window).

e [up one folder]  
In the tree view (left window), move to a folder one level above the selected folder.

f [Check All] All  
files and folders in the list view are candidates for import.

g [Uncheck] All  
import candidates are canceled.

## Check-in / check-out screen



a [New playlist] Create a new playlist. b Tree view Playlists and other information are displayed in Windows explorer format.

c [search] Search for songs from music files managed by INTERJUKE. d [Delete] Deletes the item selected in the playlist in the tree view (left window), the list view, and the list of songs recorded in the MD. e [OMG conversion] Converts the item selected in the list view to OMG (OpenMG) format. f List view A list of the breakdown of the items selected in the tree view (left window) is displayed. g [Cancel conversion] Cancels conversion to OMG (OpenMG) format.

h Check-in / check-out button

- [OUT]  
Check out the selected song in the list view to MD.
- [IN]

Check in the song selected in the MD recording song list to your computer. • [Cancel] Check-in / check-out will be cancelled. • [Mode] Switches the checkout recording mode.

i Title display field

Display / enter the MD title. You can switch between full-width and half-width by pressing the button on the left of the input area.

j MD song list A list

of songs recorded on the MD inserted in the main unit is displayed. k [Up one] Moves up one level from the

item selected in the tree view (left window). l [Number of songs / time / capacity] Display Displays the number of songs in the selected checklist, total playback time, and total capacity.

m [Number of songs / time / capacity]

Display Displays the number of songs, total playback time, and total capacity recorded in the MD inserted in the main unit.

About th

## Component screen (component control)



### a [Compo]

Returns to the previous screen.

### b [MD]

Operates the MD of the main unit.

### c [CD]

Operates the CD on the main unit.

### d [FM / AM]

Switches the radio band of the main unit.

### e [External input]

Switches the external input line of the main unit.

### f Volume

control Adjusts the volume of the main unit. (Displayed only when the component control function is turned on. For details, see "Operating the main unit from a computer (compo control)" on page 29.) g Each function display section Select with each

button. However, the display differs depending on the function.



## Internet screen



### a [Address] Display field

Enter the Internet address (URL) you want to connect to. b [Back] Returns to the previous screen. c [Forward]

Go to the next screen. d [Home] Displays the screen when the Internet screen is started.

### e [favorite]

You can display the web pages registered in [Favorites] in Internet Explorer. f [Cancel] Cancels

the connection to the Internet address (URL) that is trying to connect.

### g [Refresh]

Refreshes the displayed page to the latest status. h

Page display section [Address] Displays the Internet address (URL) page entered in the display section.

### Note

The following conditions are required to see the home page to which the button is pressed on the screen (default) that is first displayed on the page display.

- Internet Explorer 5.01 or later is installed.
- The internet connection environment is set up and connected.

About th

Navigation screen



a Playlist A list of operations that can be performed on the playlist screen is displayed. b Music CD A list of operations that can be performed on the music CD screen is displayed. c Music file A list of operations that can be performed on the music file screen is displayed. d Check In/Out Check In/Out A list of operations that can be performed on the screen is displayed.

e Component A list of operations that can be performed on the component screen is displayed. f Internet A list of operations that can be performed on the Internet screen is displayed. g A list of other operations that can be performed is displayed.

h Help Help is displayed.

# Record music

## Record a song on a music CD

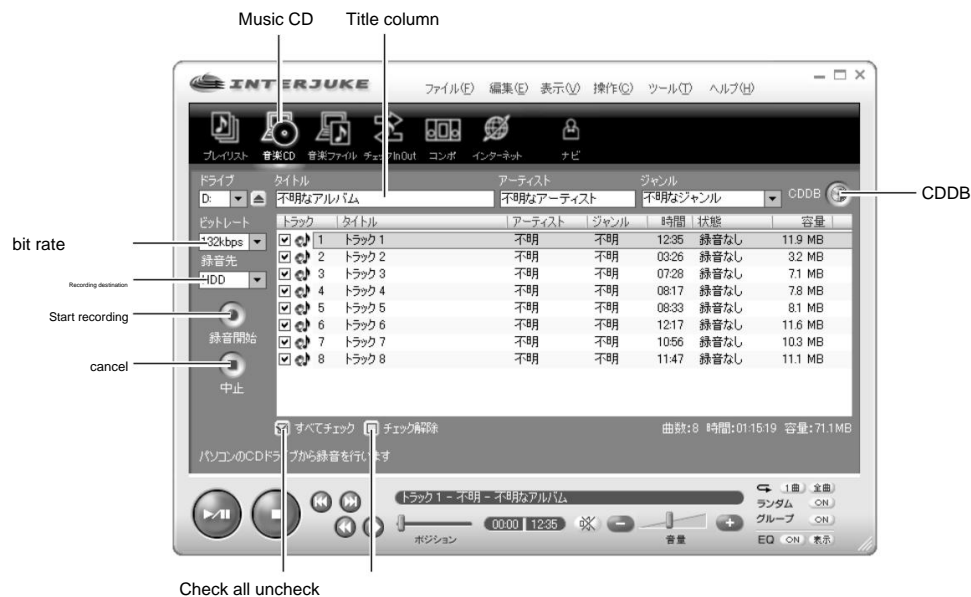
Select your favorite song from the music CD, record it, convert it to an OpenMG format ATRAC3 file, and record it on your hard disk. Recorded music files can be managed and edited as "playlists".

### 1 Insert the music CD you want to record into the CD-ROM drive of your computer.

- When you insert a music CD into your CD-ROM drive for the first time, the [Check CD Drive] screen will be displayed. Click [Start] to check the drive. Check the CD-ROM drive for optimal recording of music CDs.

### 2 Click [Music CD] at the top of the INTERJUKE screen.

A list of music CD tracks is displayed.



- If you press [CDDb] or select [Tools]-[Preferences]-[CDDb] and select "Automatically connect to CDDb", you can connect to the CD database service and automatically. Music CD information is displayed. (For details, see "Glossary" on page 38.) If "The information for this album was not found" is displayed, please enter it yourself.

To use the CDDb function, your computer must be connected to the Internet.

### 3 Select the bit rate to record

Select the desired bitrate from the Bitrate drop-down list. Three bit rates (128kbps = LP2, 105kbps = LP3, 66kbps = LP4) are available, and the sound quality and recordable time differ depending on the bit rate. Bit rate is a numerical value that represents the amount of information per second. When comparing music files of the same format, the higher this number, the better the sound quality. Conversely, a music file with a low bit rate will have poorer sound quality, but the file size can be reduced. When creating a music file, you need to set the bit rate according to your purpose. • See the table on page 20 for the relationship between the bit rate that can be specified and the recording mode (LP mode).

(Continued on the next page)

#### 4 Select a recording destination

Select a recording destination from the list of recording destinations displayed in the [Recording destination] drop-down list.

HDD: Recorded on the hard disk of the personal computer.

HDD + MD: At the same time as recording to the hard disk of the personal computer, it is checked out to the MD disk of the main unit. increase. However, in this case, you need to connect your computer to the main unit with the USB cable provided with the main unit, and press the [PC-Net MD] button on the main unit to turn on the component control function. (For details, see "Operating the main unit from a PC (component control)" on page 29.) See "Checking in / Checking Out" on page 27 for setting the recording mode to check out to MD.

5 If the album title is not displayed, click the [Title] field and enter the album title. The entered title will be the playlist name.

## 6 In the track list, click the check box of the song you want to record to check it.

Songs (tracks) that are not recorded will not be recorded if unchecked. If you accidentally uncheck it, click it again to check it. • To check all songs, click [Check All] and start with the checked songs.

Click Uncheck to uncheck it.

## 7 Click [Start Recording]

Recording of the song will start. Click Stop to interrupt the recording in the middle. • Do not start or operate other software until recording is completed.

### Caution

Observe the following precautions when using an external CD-ROM drive. 0053

Connect the CD-ROM drive and turn on the power in advance, and then start INTERJUKE.

‡ Do not do the following while INTERJUKE is running:

- Turn off the power of the CD-ROM drive.
- Unplug the connection cable between the CD-ROM drive

and your computer. Regsvr Do not eject the CD during recording.

Regsvr Some CD-ROM drives with a USB or IEEE1394 connection may not work properly.

• Relationship between the bit rate that can be specified when recording a music CD and the recording mode (LP mode)

Bit rate recording	mode sound quality		file size
132kbps	LP2	The sound quality is equivalent to that of LP2 MDLP recording.	It's about a tenth of a CD.
105kbps	LP2	The sound quality is between that of LP2 and LP4 MDLP recordings.	It is smaller than a 132kbps OMG file.
66kbps	LP4	The sound quality is equivalent to that of LP4 MDLP recording.	It's about half the size of a 132kbps OMG file.

## Import music files on your computer's hard disk

Importing music files recorded on a computer using a music distribution service via the Internet into INTERJUKE is called "import". INTERJUKE can import music files in the following formats. • MP3 files (16-bit, stereo / monaural, 32kHz / 44.1kHz / 48kHz) regsvr MP3 format music files created at variable bit rates and bit rates above 256kbps may not play and check out properly. ...

- WAV file (linear PCM, 16 bit, stereo / monaural, 32kHz / 44.1kHz / 48kHz) • OMG (OpenMG) file (stereo)

### 1 Click [Music File] at the top of the INTERJUKE screen.

The import screen is displayed.



### 2 In the tree view (left window), click the folder containing the music file you want to import.

Click The music files in the clicked folder are displayed in the list view (right window).

### 3 In the list view (right window), select the checkbox for the music file you want to import. Click to check

### 4 Click [Start Import]

The checked music files will be imported into the playlist. The playlist to be imported is either an existing playlist selected or a newly created playlist. Click Stop Import to interrupt the import in the middle.

#### Settings at the time

of import When importing a music file to INTERJUKE, the original file format is used by default.

To convert to OMG (OpenMG) format and import, follow the steps below. 1 Select [Preferences] from the [Tools] menu and click the [Import] tab.

2 Check [Convert to OMG format and import]. 3 Select a bit rate from the [Bit rate when converting] drop-down list.

basic oper

# Create and manage playlists

Music files created by INTERJUKE can be managed and played by artist, album, and genre by creating a "playlist". Recording a music CD automatically creates a new playlist, but you can also create a playlist that contains only your favorite songs.

## Create a new playlist

### 1 Click [Playlist] at the top of the INTERJUKE screen.

The playlist screen is displayed.



### 2 Click [New Playlist]



### 3 Enter the name of the newly created playlist



### 4 Click OK

## Edit an existing playlist

### Add songs to playlists

#### 1 Tree view (left window) of the group that contains the song you want to add to the playlist.

Click to select from The songs in the clicked group are displayed in the list view (right window).



#### 2 In the list view (right window), click to select the song you want to add.

If you hold down the [Shift] key and click a song, you can select multiple songs with consecutive song orders.  
If you hold down the [Ctrl] key and click a song, you can select multiple songs that are out of order.

#### 3 Drag and drop the song you want to add to the playlist (left window)

The dragged and dropped song will be added to the playlist. If there are other songs you want to add, repeat steps 1 and 2 above. • You can also select a song in the list view (right window) and add it to the playlist from the right-click menu to come.

### Sort the song order in the playlist

#### 1 Select the playlist you want to rearrange by clicking from the tree view (left window) . The songs in the clicked playlist are displayed in the list view (right window).

#### 2 In the list view (right window), select the songs you want to sort, and drag and drop them to move them to any position. The songs in the playlist are played in the order of the song list numbers. • You can also sort by clicking [Up One] or [Down One] on the [Edit] menu. • You can also move by holding down the [Alt] key and pressing the [y] or [Y] keys.

basic oper

# Play music

You can play songs created by INTERJUKE and stored in playlists, and music files such as MP3s on hard disks and CD-ROMs. You can also connect your computer to the main unit with the USB cable that comes with the main unit and enjoy the sound from the speakers of the main unit. (Refer to the instruction manual of the main unit for how to connect to the main unit.) ‡ INTERJUKE can play music files in MP3, WAV, OMG (OpenMG) format.

## Play the songs in the playlist

### 1 Click [Playlists] at the top of the INTERJUKE screen.

Alternatively, select [View]-[Playlist] from the menu bar on the INTERJUKE screen. The playlist screen is displayed.

### 2 Click to select the playlist containing the songs you want to play in the tree view (left window) of the playlist screen. The songs in the clicked playlist are displayed in the list view (right window).



### 3 Select the song you want to play in the list view (right window) and click the play button at the bottom left of the screen.

The selected song will start playing. If you press the play button with only the playlist selected, the songs in the playlist will be played in order from the first song. Click the Stop button to stop playback. • You can also play a song in the list view (right window) by double-clicking it. Also, list view (right win)

You can also select a song from Do) and play it from the right-click menu.

- If you select a playlist and play it from the right-click menu, the first song in the playlist will be played.



## Play music files on your CD-ROM drive or hard disk

### Play a music CD on your CD-ROM drive

#### 1 Click [Music CD] at the top of the INTERJUKE screen.

Alternatively, select [View]-[Music CD] from the menu bar of the INTERJUKE screen.  
The music CD screen is displayed.

#### 2 Select the track you want to play on the track display, and click the play button at the bottom left of the screen.

Playback of the selected song

will start. • Click the Stop button to stop playback. • You

can also play a song in the list view (right window) by double-clicking it. Also, list view (right win)

You can also select a song from Do) and play it from the right-click menu.



basic oper

(Continued on the next page)

## Play music files on your hard disk

### 1 Click [Music File] at the top of the INTERJUKE screen.

Alternatively, select [View]-[Music File] from the menu bar of the INTERJUKE screen. The music file screen is displayed.

### 2 Click to select the location of the music file you want to play in the tree view (left window). The music file in the clicked location is displayed in the list view (right window).

### 3 Select the music file you want to play in the list view (right window), and click the play button at the bottom left of the screen.

Click. The selected

song will start playing. • Click the

Stop button to stop playback. • You can also play a song in the list

view (right window) by double-clicking it. Also, list view (right win)

You can also select a song from Do) and play it from the right-click menu.



Note If

you play a file that contains a CD (live, non-stop, etc.) with no gaps between songs, you can create gaps between songs.

# Check in / check out

You can check out music files created and saved by INTERJUKE to the main unit. You can check out up to 3 times if you recorded from a music CD. Music files checked out to the main unit can only be checked in to the computer from which they were checked out. Regsyr Do not do the following when you are checking in / checking out: It will be the cause of the failure. • Unplug the USB cable • Turn off [PC-Net MD] on the main unit • Turn off the power of the PC or main unit 0053 It may take a long time to check out or check in dozens of songs at once.

## Transfer music files to the main unit (checkout)

1 Connect the main unit and the PC with the USB cable included with the main unit.

- For the connection method, see the instruction manual of the main unit.

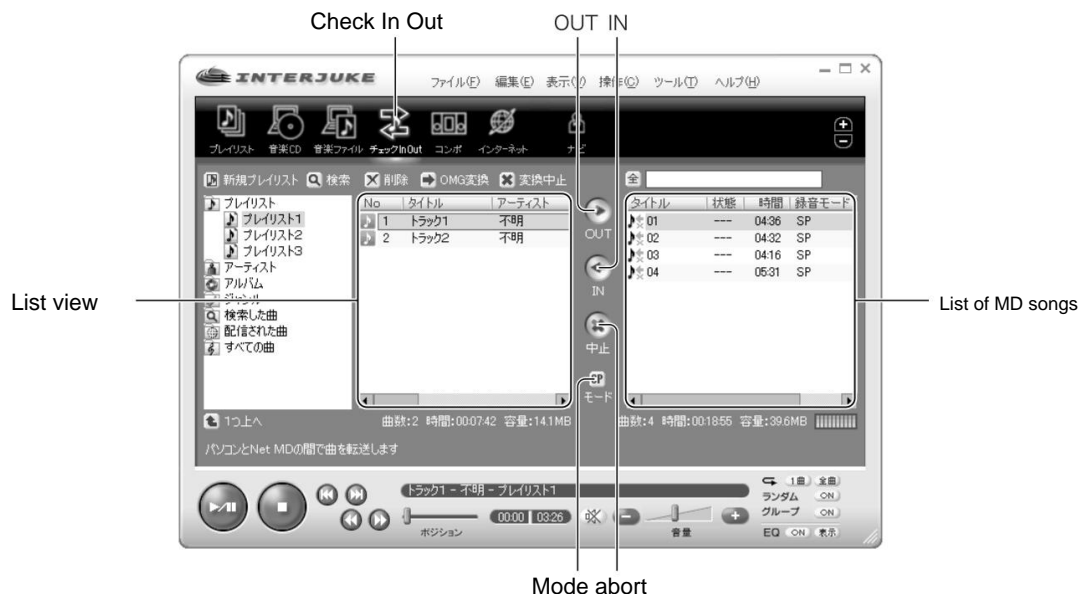
2 Press the [PC-Net MD] button on the main unit to turn on the component control function.

The main unit is recognized by the personal computer and the MD information is read. For details, see "Operating the main unit from a PC (component control)" on page 29.

3 Click Check In Out at the top of the INTERJUKE screen.

The check-in / check-out screen is displayed.

A list of songs in the MD contained in the main unit is displayed in the MD recorded song list.



4 In the list view, click to select the song or playlist you want to check out.

If you hold down the [Shift] key and click a song, you can select multiple songs with consecutive song orders.

If you hold down the [Ctrl] key and click a song, you can select multiple songs that are out of order. When you check out from a playlist, it will automatically create a group with the playlist name and record in it. (Continued on the next page)

basic oper

## 5 Click [Mode] to select the recording mode.

If you check out in LP mode, the MD can only be played on MDLP-enabled machines. If you are playing on a machine that does not support MDLP, check out in SP mode. Even if you check out in SP mode, the sound quality is equivalent to LP mode. In addition, SP mode is a mode for playing on a machine that does not support MDLP, and the sound quality is equivalent to the bit rate at the time of recording, which is different from SP mode recorded on the main unit. • If you record a CD with no space between songs (live, non-stop, etc.) and check out, you can create space between songs in SP mode.

increase.

- When checking out in LP mode, the recording mode may be LP2 or LP2 depending on the bit rate of the OMG file. LP4 is automatically determined. (See the table on page 20.)

## 6 Click [OUT]

The checkout of the selected song will start and it will be added to the list of MD songs. If you want to cancel the checkout in the middle, click [Cancel]. • Do not start or run any other software until checkout is complete.

Converting to OMG (OpenMG) format If you check out a music file imported into INTERJUKE as MP3 or WAV, it will be automatically converted to OMG format and then checked out. You can also convert it to an OMG format file by following the steps below before checking out. 1 Click the playlist containing the music file you want to convert from the tree view (left window) to select it. 2 In the list view, click the music file you want to convert

bit rate

And choose.

3 Click [OMG Conversion]. (Or [Operation]-

[Convert to OMG format])

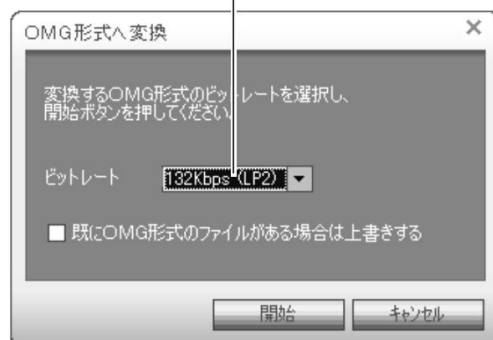
4 Select a bit rate from the drop-down list and click OK

click. The selected

music file will be converted to OMG format. • Start and operate

other software until the conversion is completed.

Please do not let me.



## Return the checked out music files to your computer (check-in)

The songs in the MD contained in the main unit can only be checked in to the computer from which the check-out source was performed.

### 1 Click [Check In Out] at the top of the INTERJUKE screen.

The check-in / check-out screen is displayed.

A list of songs in the MD contained in the main unit is displayed in the MD recorded song list.

### 2 In the list of MD songs, click the song or group you want to check in to select it.

If you hold down the [Shift] key and click a song, you can select multiple songs with consecutive song orders.

If you hold down the [Ctrl] key and click a song, you can select multiple songs that are out of order.

### 3 Click [IN] in the center of the screen.

Check-in for the selected song will start, and at the end of check-in, the number of times you can check out the list view will be added. If you want to cancel the check-in in the middle, click [Cancel].

# Operate the main unit from a personal computer (component control)

You can operate the main unit from the personal computer by connecting the main unit to the personal computer and pressing the [PC-Net MD] button on the main unit.

Refer to the instruction manual of the main unit for how to connect the main unit and the personal

computer. ‡ It takes some time to read the MD information of the main unit. (The time varies depending on the recording status of the MD.) ‡ Only "SS-NT1MD" can be operated with INTERJUKE. You cannot operate other Net MD compatible models.

## 1 Connect the main unit and the PC with the USB cable included with the main unit.

- For the connection method, see the instruction manual of the main unit.

## 2 Press the [PC-Net MD] button on the main unit to turn on the component control function.

## 3 Click [Compo] at the top of the INTERJUKE screen.

The component screen is displayed. •

Click [Compo] again to return to the original button screen.

## 4 Click the button of the operation you want to perform on the main unit to select it.



(Continued on the next page)



## Manipulate MD

You can use the operation buttons at the bottom of the screen to perform not only normal performances, but also repeat, random, and group performances. • When the MD is replaced, it takes some time to read the MD information of the component.

- MD has a disc title, song title, and group title.

You can be kicked.

- Select a song and select [Edit song information] from the right-click menu or [Edit] menu to check, enter, edit, or convert from full-width to half-width MD song information.
- You can move songs in the MD, edit groups, and ALL ERASE the MD. • Click an unnecessary song to select it, and then press [Delete] to delete the song from the MD.
- Click [Program] to play the program. (Up to 32 songs can be programmed) • You can also click [Eject] to eject the MD.

### Note If

you unplug the power plug of the main unit after checking out or editing the title, it will not be recorded correctly on the MD. Be sure to remove the MD after completing the MD operation.



## Operate the CD

You can use the operation buttons at the bottom of the screen to perform not only normal performances, but also repeat and random performances. • When you replace the CD, it may take some time to read the CD information of the component stereo.

- Click [Program] to play the program.  
(Up to 32 songs can be programmed)
- You can also open and close the CD door by clicking Open / Close.



### Recording a

CD Click [Recording Screen] to display the recording screen, where you can record from a CD to an MD. 1 Select [Recording speed] and [Recording time] from the drop-down list. 2 Click [Start] Recording starts from track 1 and is added to the list of MD songs.

- If you want to stop recording in the middle, click [Cancel].
- To perform group recording, select [Tools]-[Preferences]-[Others] and click the "Perform group recording" check box to check it.

### Program recording 1

Click [Program] and record the program in the list view.

Select the song you want

- 2 Click the [Add] button in the center. The selected song will be added to the program list on the right. Repeat this operation.

- 3 Click the [Recording screen] button

The screen switches to the program recording screen.

- 4 Click the [Start] button in the center. Program

recording starts and records as programmed. • Program recording can be performed at constant speed and double speed. (The main body can be up to 4x speed.)





Choose an FM / AM band

- Click [FM] to listen to the FM radio received by the main unit. • Click [AM] to listen to the AM radio received by the main unit.



Choose an external input

- Click [USB] to listen to the audio being played on your computer through the main unit.
- Click [DIGITAL IN] to listen to the sound source from the device connected to the OPTICAL DIGITAL IN terminal of the main unit.
- Click [LINE] to connect to the LINE IN terminal of the main unit.

You can listen to the sound source from the device you are using.

Else When you play a music file on your computer, the external input is automatically switched to USB. However, since it does not switch during check-in / check-out, you may not hear any sound even if you play a music file on your computer.



basic oper

# Use the navigation function

By following the screen display using the navigation function, you can display the desired screen as well as the explanation of the operation. It is also useful to check what you can do on each screen of INTERJUKE.

## Activate the navigation function

### 1 Click [Navi] at the top of the INTERJUKE screen.

The navigation screen is displayed in front of the INTERJUKE screen.



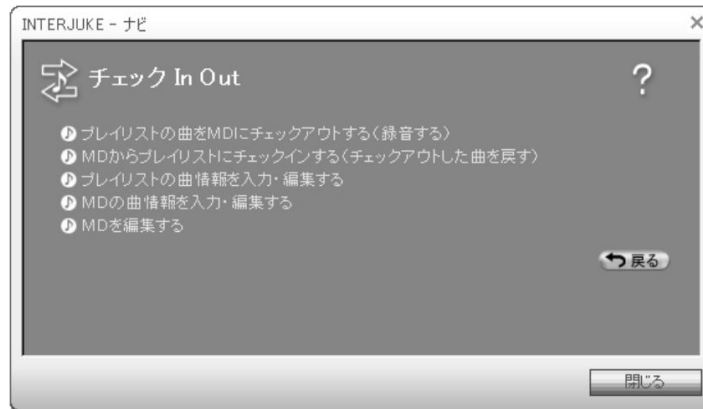
### 2 Click the icon whose contents you want to display from each screen of INTERJUKE or [Others].

If you click Help, help will be displayed.

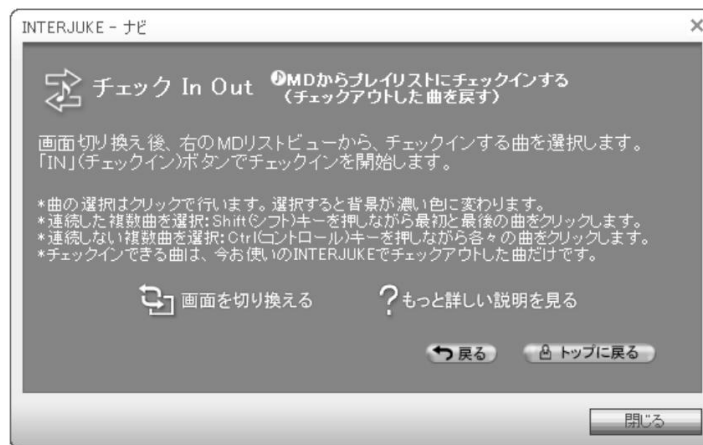




3 Select the item you want to display from the list of operations and click it.



4 A description of the selected item is displayed.



- Click [Switch screen] on the displayed item to display the INTERJUKE screen corresponding to the selected item. It will switch.
- To see more detailed explanations, click [See more detailed explanations] to display help.

Navi provides a brief explanation of typical operation items and switches the screen to INTERJUKE. It is convenient to learn how to use it.

From the menu bar of the INTERJUKE screen, select [Tools]-[Preferences]-[Others] to set the navigation display at startup.

basic oper

# Menu list

## File menu

New playlist Create	a new playlist.
New Group	Create a new group on the MD.
Search	for songs Search for songs by song title, artist name, or album name.
Exit	Exit INTERJUKE.

## [Edit] Menu

Change Playlist	Name Changes the selected playlist name.
Change Group	Name Changes the selected group name in MD.
Editing song	information Edit song information such as title, artist, album, and genre.
Delete	Deletes the selected song from the music library. • In this case, the song itself (sound file itself) recorded in INTERJUKE will not be deleted. You can also delete MD songs. • In this case, the song itself (music file itself) is completely deleted.
JOIN <Join>	Connect two songs.
DIVIDE <Split>	Divide the song into two.
Group JOIN <Join>	Connects two groups.
Group DIVIDE <split>	Divide the group into two.
ALL ERASE <Initialize MD> ALL	ERASE (initialize) the MD contained in the MD component.
Move up	one song The song selected in the playlist is moved up one.
Move	down one song The song selected in the playlist is moved down one.
Check All Check	all files.
Uncheck All Unchecks	all the checks you put on the file.

Select all In  
the displayed screen, the items in the list view selected from the tree view (left window), the songs in the selected playlist, the songs in the track display section of the CD, and the songs in the MD recording list. Select all songs and so on.

## [View] Menu

Playlist Displays	the playlist screen.
Music CD	Displays the music CD screen.
Music file	Displays the music file (import) screen.
Check-in / Out Displays	the Check InOut screen.
Component	operation Select the component screen (component control) to be displayed.  MD: Displays the MD operation screen of the component screen (component control). CD: Displays the CD operation screen of the component screen (component control). FM / AM: Shows the FM / AM band selection screen of the component screen (component control). External input: Displays the selection screen for external input devices on the component screen (component control). Program screen: Shows the program performance screen of the CD of the component screen (component control). Recording screen: Displays the recording screen of the CD on the component screen (component control).
Internet Displays	the Internet screen.
Navi	Displays the navigation screen.
Scope	Select the display style of the scope. Spectrum analyzer: Displays the scope in spectrum analyzer style. Waveform: Displays the scope in a waveform style.

Update to the latest  
information Updates the displayed information to the latest information.

[Operation] Menu Play /

Pause Plays the selected  
playlist or song. Playback is paused during playback.

Stop  
Playback is stopped.

Previous Cue to the beginning of the currently playing song.

Next  
Cue the next song of the currently playing song.

Random  
Turns ON / OFF the ability to play songs in a playlist in a  
random order.

Group playback  
Switches the MD group playback function ON / OFF.

Repeat  
Select the repeat playback settings. 1  
song repeat: The song being played is played repeatedly.  
All song repeat: All in the playlist being played  
Play the song repeatedly. No  
repeat: Plays without repeat.

Equalizer Make  
selections regarding the equalizer.  
Equalizer screen: Displays the equalizer screen. You can  
adjust up to four sounds to your  
liking, and save the settings as user  
settings. You can also reset the  
settings by clicking Reset. Equalizer  
ON: Turns on the equalizer function.

Start import Starts  
importing the selected song.

Cancel import  
Cancels importing songs.

Convert to OMG  
format Converts the selected song to OMG format.

Cancel conversion to OMG  
format Cancels conversion of songs to OMG format.

Start  
recording Starts recording a music CD.

Stop  
recording Stops recording a music CD.

Check-in start Check-  
in will start.

Start checkout Starts  
checkout.

Cancel check-in / out Check-  
in / out will be cancelled.

Recording

Mode Select the recording mode for checkout.  
LP recording: Select LP mode.  
SP recording: Select SP mode.

[Tools] menu

CDDDB

Select the CDDDB function. Get  
Information: Connect to CDDDB to get information about  
music CDs. Edit information: Edit the acquired  
disk information. Registering information: Registers the  
edited information in CDDDB. Option: Set up the CDDDB  
connection.

Preferences

Displays the preferences screen.

[Help] menu

Help

Displays help. (See "About Help" on page 2)

Navi

Displays the navigation screen. (See "Navigation Screen" on  
page 18)

Website Select

the website you want to view by connecting to the Internet.

INTERJUKE Home Page: Displays  
the INTERJUKE Home Page.

Gracenote --the # 1 Music Information Source: Displays the  
home page of Gracenote, which operates CDDDB.

OpenMG Home Page: Displays  
the OpenMG home page.

About Gracenote CDDDB

Displays version information for the Gracenote CDDDB control.

About INTERJUKE

Displays the version information of INTERJUKE.

Consideration

# Uninstall INTERJUKE

---

## For Windows XP / Windows 2000 Professional

Log in with an administrator account (Administrator or a user in the Administrators group)  
Please go after that.

---

1 For Windows XP: Click [Start] button and then [Control Panel]. For Windows 2000 Professional: From the [Start] button, click [Settings]-[Control Panel]. The [Control Panel] screen is displayed. increase.

---

## 2 For Windows XP: Click the [Add or Remove Programs] icon \*

For Windows 2000 Professional: Double-click the Add / Remove Programs icon  
The Add / Remove Programs Properties dialog box appears.

---

## 3 Click [Change / Remove Programs]

---

4 Select [INTERJUKE] from the [Currently installed programs] list and click [Change / Remove] ([Change / Remove] for Windows 2000 Professional) . INTERJUKE will be uninstalled. \* Double-click in classic view, click in category view.

---

## For Windows 98 / Windows 98 Second Edition / Windows Me

---

### 1 From the [Start] button, click [Settings]-[Control Panel].

The Control Panel screen is displayed.

---

### 2 Double-click the Add / Remove Programs icon

The Add / Remove Programs Properties dialog box is displayed.

---

3 Select [INTERJUKE] from the list of software that can be deleted automatically, and then click [Add / Remove].  
Click  
INTERJUKE will be uninstalled.

# About backup / restore (restore) of music data

---

If you back up your music data before the following situations occur due to a malfunction of this product or your computer, you will be able to restore the music data.

- When you buy a new computer •

When you reinstall the OS • When the

music database is corrupted due to the OS function "System Restore" etc. • When

the music database is corrupted due to abnormal termination of the OS, etc.

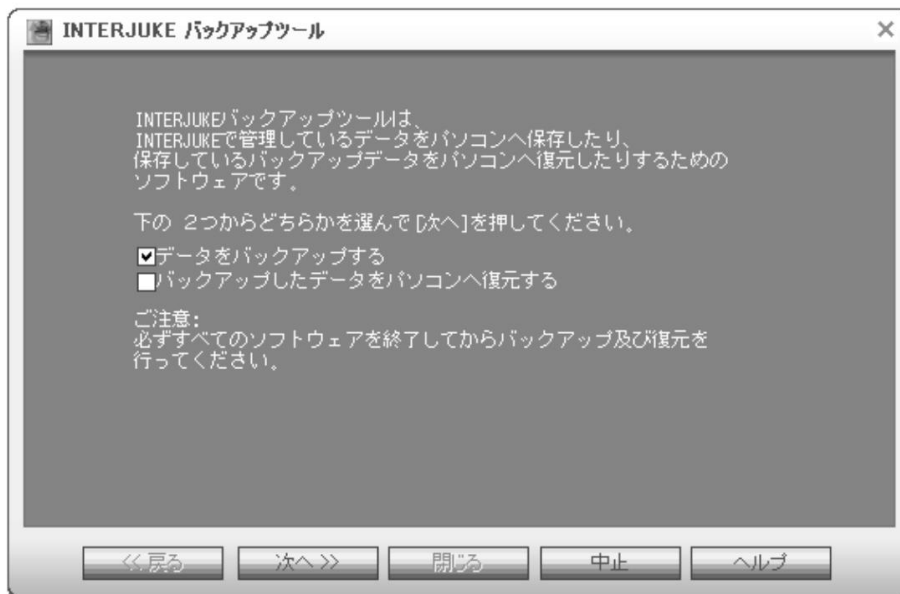
INTERJUKE encrypts and stores music data for copyright protection. A dedicated "INTERJUKE backup tool" is required to back up / restore this encrypted music data. Regsvr When performing a restore, the computer is connected to the Internet because it connects to the server and authenticates.  
is needed.

---

## 1 From the [Start] button, click [All Programs \*]-[INTERJUKE]-[INTERJUKE Backup Tool] to start the INTERJUKE Backup Tool.

The INTERJUKE backup tool screen is displayed.

\* Except for Windows XP, it is [Program].



---

## 2 Check either [Back up data] or [Restore backed up data to computer], click [Next >>], and then follow the on-screen instructions.

0053 If recording or downloading is not possible due to a malfunction of INTERJUKE or a personal computer, or the music data is damaged. Or, please forgive the compensation of the data contents such as when it is deleted.

# Glossary

---

ÿSee Help for a description of terms other than those listed here. (See "About Help" on page 2)

## ATRAC3

Abbreviation for Adaptive Transform Acoustic Coding 3. It is an audio compression technology that achieves both high sound quality and high compression. Audio data can be compressed to about 1/10 that of a music CD, making it possible to keep the data size small.

## CDDDB

One of the database services for music CDs created on servers on the Internet, operated by Gracenote. It can be used in an environment where you can connect to the Internet. It is created based on the information registered by the user, and it is necessary to separately register as a CDDDB user in order to use it. (If you have already registered as a user with another company's Jukebox software, you do not need to register again.)

## MP3

Motion Picture Experts Group 1 (MPEG-1) Abbreviation for Audio Layer 3, a standard for audio compression defined by the ISO (International Organization for Standardization). Audio data can be compressed to about 1/10 of a music CD, and one CD-R or CD-RW can hold the data of 10 music CDs.

## Net MD

USB (Universal Serial Bus) is a standard for high-speed transfer of music data from a personal computer to an MD. By adopting advanced copyright protection technology, it is possible to use Net MD compatible music distribution services and transfer music data from personal computers to MD devices at high speed without infringing copyright. MDs recorded on Net MD can be played on existing MD equipment.

## OpenMG is

a copyright protection technology used when handling music files on a personal computer. With OpenMG-compatible software such as INTERJUKE, you can encrypt and record music data on your computer and enjoy playing music on that computer. It also makes it possible to prevent unauthorized distribution to the Internet.

## An

abbreviation for SDMI Secure Digital Music Initiative, it is a forum organized by the music industry, computer industry, and various related companies and organizations with the aim of establishing copyright protection technology for digital music that is common throughout the world. We are creating a framework to prevent the illegal use of music files and promote proper music distribution services. OpenMG is SDMI compliant.

Abbreviation for USB Universal Serial Bus, which is a common interface standard for connecting various peripheral devices such as keyboards and mice. The feature is that peripheral devices can be connected and disconnected even when the power of the personal computer is on.

## WAV

Windows standard audio file format, Windows startup sound, error warning sound, etc. are also saved in this file format. It stipulates the storage format for recording audio signals converted to digital data. The compression method is not specified, and any compression method can be used. By adding software called "CODEC" (codec: software that compresses and decompresses data), various compression methods such as ATRAC3 and MP3 can be used.

## Import

Importing music files recorded on a computer using a music distribution service via the Internet into INTERJUKE is called "import". INTERJUKE can import music files in MP3, WAV and OMG (OpenMG) formats.

## Check-in / Check-out Transferring

music files managed by OpenMG-compatible software to an external device / media on a computer is called "check-out", and the checked-out music files are returned to the original computer. This is called "check-in". Checked out files cannot be checked in to another computer. You can check out up to 3 times if you recorded from a music CD. You can check in a file that you checked out once and then check it out again.

# Search

## A

ATRAC3 ... .. 2, 2, 19, 38

## C

CDDB ... .. 2, 38

## H

HCMS ... .. Five

## M

MP3 ... .. 21, 24, 28, 38

## N

Net MD ... .. 2, 38

## O

OMG (OpenMG) ... .. 2, 24, 28

OpenMG .. .. 2, 4, 5, 19, 38

## S

SCMS ... .. Five

SDMI ... .. 38

## U

USB ... .. 4, 6, 31, 38

## W

WAV ... .. 21, 24, 28, 38

Windows .. .. 6, 7, 36

## A line

Uninstall. ... .. 36

install. ... .. 6, 7

Internet ... .. 5, 17, 21

Import ... .. 4, 14, 21, 38

Music CD ... .. 4, 13, 19, 22, 25, 27

Music files ... 4, 14, 21, 25, 26, 27, 28

## Ka line

Start-up ... .. Ten

Component control ... .. 4, 16, 29

## Sa line

System configuration. ... .. 6

Limitations ... .. Five

## Line

Check out ... .. 4, 5, 20, 27, 38

Check-in ... .. 4, 5, 27, 28, 38

Copyright ... .. 5, 37, 38

## Line

Navi ... .. 10, 18, 32

## Is a line

Backup / Restore (Restore) ... .. 37

bit rate. ... .. 19, 28

Playlist ... .. 4, 12, 19, 22, 24

Program recording ... .. 30..

help ... .. 2

## Ma line

menu ... .. 11, 34

## Line

Recording ... .. 4, 5, 19, 30



# **日本ビクター株式会社**

AV & マルチメディアカンパニー

〒221-8528 神奈川県横浜市神奈川区守屋町3-12